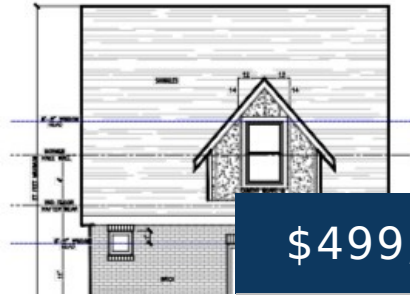


LEFT SIDE ELEVATION  
FACING EXISTING HOUSE



REAR ELEVATION

NOTE:  
HOUSE IS 1 1/2 STORIES.  
DORMERS = 50% OF ENTIRE ROOF  
WALL PLATE HEIGHT = 4 FEET ON  
BOTH FRONT AND REAR KNEE WALLS ARE  
4 FEET HIGH ABOVE WALL PLATES  
GFA ON 2ND FLOOR = 75% OF 1ST FLOOR.



**\$499,000**

## 1897 MCKENNEL DRIVE, NASHVILLE, TN, US,

<https://therealtorken.com>

Welcome to your adorable new construction brick home in a neighborhood preservation within East Nashville! This one of a kind 1.5-story home exudes warmth and character, featuring three cozy bedrooms and three stylish bathrooms, this home proves that good things come in small packages. As you enter, you'll be captivated by the unique finishes that [...]

- 3 beds
- 3 baths
- Residential
- Horizontal Property Regime - Detached
- Active
- 1027 sq ft

## Rooms



Room type	Dimensions
Bedroom 1	9x12
Bedroom 2	8x8
Bedroom 3	10x12
Dining Room	5x8
Kitchen	8x7
Living Room	11x8

## Building Details

<b>Cooling features:</b> Attic Fan, Ceiling Fan(s), Central Air, Electric	<b>ArchitecturalStyle:</b> Cape Cod
<b>ParkingTotal:</b> 2	<b>NewConstructionYN:</b> Yes
<b>Heating:</b> Central, Electric	<b>Basement:</b> Slab
<b>Exterior material:</b> Brick	<b>Parking:</b> Detached, Driveway

## Amenities & Features

<b>Waterfront available:</b> No	<b>GarageYN:</b> No
<b>AttachedGarageYN:</b> No	<b>FireplaceYN:</b> No
<b>PoolPrivateYN:</b> No	<b>Utilities:</b> Electricity Available, Water Available
<b>Amenities:</b> Dishwasher, Disposal, Freezer, Microwave, Refrigerator, Stainless Steel Appliance(s)	<b>Features:</b> Built-in Features, Ceiling Fan(s), Kitchen Island, Storage, Walk-In Closet(s)

