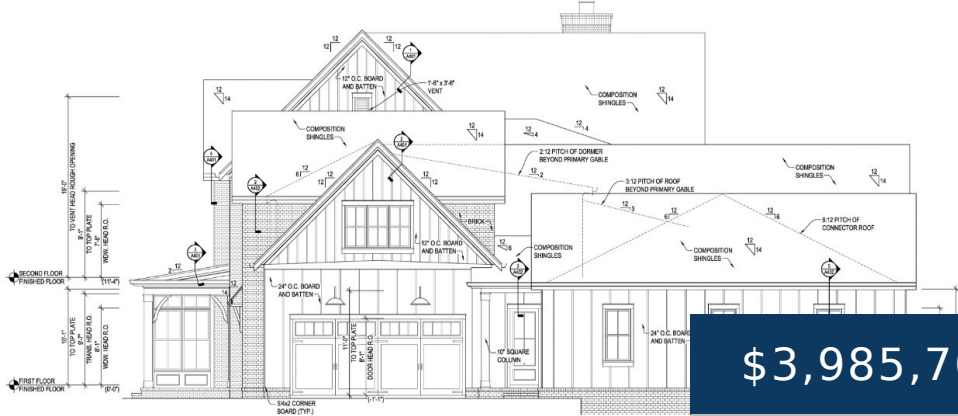




FRONT ELEVATION
SCALE: 1/8" = 1'-0"



\$3,985,700

- 6 beds
- 6 baths
- Residential
- Single Family Residence
- Active
- 8090 sq ft

8876 EDGEComb DR, COLLEGE GROVE, TN, US,

<https://therealtorken.com>

This magnificently designed Modern Farmhouse home by Alyson Sailer has a total of 8,090 sq ft.! As you enter the front door you are made aware of how beautiful the home & the setting are, as you look through the coffered ceiling foyer, into Family Room over the covered porch to the trees in the [...]

Rooms



Room type	Dimensions
Bedroom 1	15x21
Bedroom 2	12x14
Bedroom 3	12x12
Bedroom 4	13x16
Bonus Room	22x20
Den	13x16
Dining Room	12x15
Kitchen	11x17
Living Room	21x20

Building Details

Cooling features: Central Air

NewConstructionYN: Yes

Basement: Combination

Roof: Shingle

ParkingTotal: 3

Heating: Natural Gas

Exterior material: Brick, Fiber Cement

Parking: Attached

Amenities & Features



Waterfront available: No

AttachedGarageYN: Yes

PoolPrivateYN: No

ExteriorFeatures: Garage Door Opener,
Gas Grill

Amenities: Dishwasher, Disposal, Freezer,
Microwave, Refrigerator

GarageYN: Yes

FireplaceYN: Yes

Security Features: Carbon Monoxide
Detector(s), Smoke Detector(s)

Utilities: Natural Gas Available, Water Available

Features: Ceiling Fan(s), Elevator, Entry Foyer,
Extra Closets, Gas, Kitchen Island, Pantry,
Storage, Walk-In Closet(s), Wet Bar, Wood
Burning

